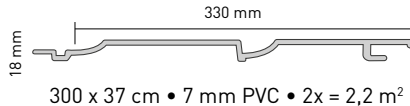
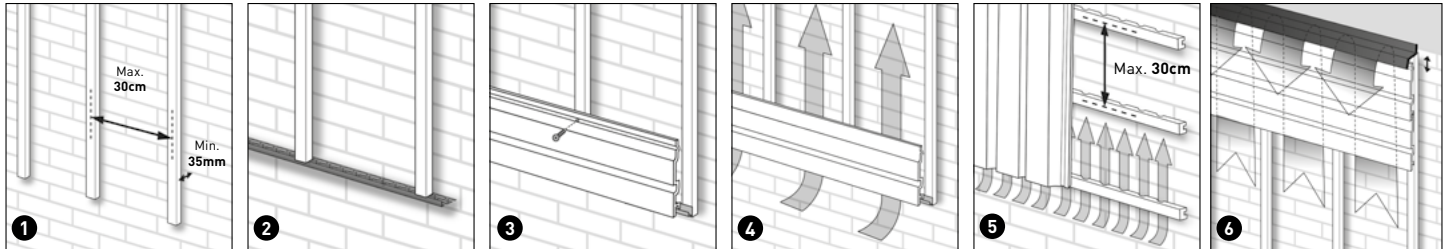




# OUTDOOR WEATHERPROOF PVC SIDING



## Double Dutch lap siding



### Siding assembly instructions

#### General

Outdoor siding are double board panels made of full foam PVC with a natural wood effect applied on the top layer.

#### Utilisation

Outdoor siding can be used to replace or for newly built facades, such as on a house, carport, dormer, chalet, garden shed and anywhere where necessary.

#### Storage

Outdoor siding panels should be stored in the original packaging with enough support and away from the influences of weather. Open entire packaging when storing outdoors.

#### Tools

It is best to process and saw outdoor panels with normal woodworking tools.

#### Before you start

Always make sure that the visible parts of the siding panels do not touch sharp and hard objects. Remove the protective foil when commencing assembly so the surface can be checked.

#### Timber frame and ventilation

It is important to create the necessary aeration and ventilation when assembling outdoor siding panels to prevent condensation, discoloration, mould and deformation due to excessive temperatures (4). You

can create this by installing a vertical or horizontal timber frame. This creates an air cavity that should be left open at the top and bottom to keep air flow going behind the construction. To finish the panels at the top a weathering cover (6) is available, for the bottom the ventilation corner (2). The space behind the panels should never be filled with insulating material. Always place any insulation or vapor barrier behind the timber frame.

The panels are secured to an existing timber frame that is connected vertically or horizontally (depending if you fix the panels horizontally or vertically) 30 cm centre-to-centre (1). The batons must be properly aligned and be at least 35 mm thick and at least 30 mm wide. The use of ventilation batons (5) is recommended and is absolutely necessary when the panels are fixed vertically (and thus the timber frame horizontally). The solidity of existing wooden elements to which the batons are connected should be checked first and need to be replaced where necessary.

#### Assembly

Inspect all panels before installation for visible defects. Panels with visible defects should not be installed. After installation a claim will not be accepted. Always begin with levelling the start strip (3). After assembly of the start strip, the panels can be piled up evenly. The panels should preferably be attached with stainless steel screws (25mm length) in the centre of the groove that is intended for this

on each style. The sides can be finished with an end strip or an outside corner.

A 10 mm expansion gap should be provided between the panel and the end strip or outside corner for expansion. The panels can be lengthened with a connection section. A 10 mm expansion gap should be provided where two panels are connected by a connection strip.

#### Maintenance

Outdoor siding requires almost no maintenance. If necessary, the panels can be cleaned with water and a non-acidic cleaning product. Do not use solvents or abrasive cleaning products.

#### IMPORTANT!!!

**Keep shrinking and expansion in mind. Leave enough play when placing the finishing strips. The warranty provisions only apply if the installation of the Outdoor panels has been carried out entirely according to these instructions.**

### Matching accessories



Aluminium start U strip

End strip

Outside corner

Connection strip

Weathering cover

Ventilation corner



|  |                                                                                 |    |                                             |                               |
|--|---------------------------------------------------------------------------------|----|---------------------------------------------|-------------------------------|
|  | HDM NV<br>Kiezelt Kleine Brogel 57,<br>3990 Peer                                | 14 | Reaction to fire                            | C S3 d0                       |
|  | DOP- CE_0120-OUT_001                                                            |    | Release of dangerous substances by emission | NPD                           |
|  | EN 13245-2:2008 / AC:2009                                                       |    | Mounting resistance                         | See installation instructions |
|  | HDM - Outdoor sidings - PVC-UE rigid foam cellular profiles for facade cladding |    | Mechanical resistance                       | 23,10                         |
|  |                                                                                 |    | Durability                                  | NPD                           |
|  |                                                                                 |    | Made in Turkey                              |                               |

